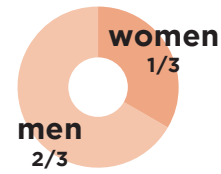




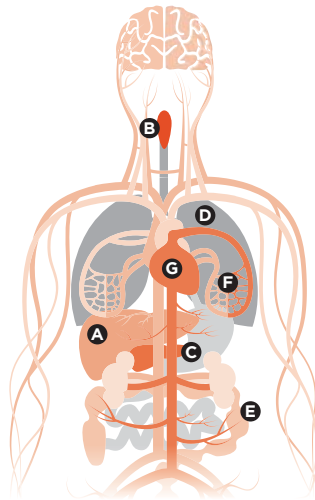
Alcohol and health

3.3 million **deaths**
 6 deaths every minute
 from harmful use of alcohol
every year



Harmful use of alcohol causes

-  **100%** of fetal alcohol syndrome
-  **100%** of alcohol use disorders
-  **22%** of suicides
-  **22%** of interpersonal violence
-  **15%** of traffic injuries



- A** 50% of liver cirrhosis
- B** 30% of mouth and throat cancers
- C** 25% of pancreatitis
- D** 12% of tuberculosis
- E** 10% of colorectal cancer
- F** 8% of breast cancer
- G** 8% of heart disease

Reduce harmful use of alcohol

Best buy interventions

-  **Regulate availability**
-  **Restrict advertising**
-  **Use pricing policies**

More key interventions

-  **Raise awareness of alcohol-attributable health burden**
-  **Support community action to prevent and reduce the harmful use of alcohol**
-  **Provide consumer information on alcohol containers**
-  **Regulate informally produced alcohol**
-  **Implement drink-driving policies**
-  **Develop surveillance systems for alcohol consumption, health consequences and policy**
-  **Prevent and treat alcohol use disorders**



10% reduction in the harmful use of alcohol by 2020