



# **SOUTH SUDAN EVD TASKFORCE MEETING**

## **4<sup>th</sup> October 2018**

**Update on South Sudan's preparedness and response readiness capacities**

# NTF Meeting Agenda; 04/10/2018

Item	Description	Time	Responsible person
1	<ul style="list-style-type: none"> <li>Self Introduction</li> <li>Communication from the Hon. Minister</li> </ul>	2:00-2:05 pm	Dr Riek Gai Kok
2	Review of action points from previous meeting	2:05-2:20 pm	NTF Secretariat
	EVD alert in Yei River	2:20-2:30 pm	Dr Alice
3	<ul style="list-style-type: none"> <li>Latest Update on EVD outbreak situation in DRC</li> <li>Epidemiology, Surveillance and Laboratory status in South Sudan                             <ul style="list-style-type: none"> <li>Discussion</li> </ul> </li> </ul>	2:30-2:40 pm	Dr Ifeanyi /Dr Wamala
4	<ul style="list-style-type: none"> <li>Updates on EVD TWGs per thematic areas:</li> <li>Current Status/progress made</li> <li>Challenges/Gaps</li> <li>Recommendation and way forward</li> </ul>	2:40-3:20 pm	TWGs leads & Co. leads
5	A.O.B	3:20-3:30 pm	All

# Key action points from meeting held on 20/9/2018

Action	Description	Responsible
1	Health Cluster to meet to fine tune partner commitments, responsibilities, pledges and gaps per location	Health Cluster
2	Health cluster to liaise with MSF family and ICRC and discuss on their plans and commitments on the EVD preparedness and response	Health Cluster
3	Health Cluster to contact ALIMA and Samaritan Purse with requisite expertise for EVD case management due to the uncertainty of MSF to take up the responsibility of case management preparedness	Health Cluster
4	Health Cluster to discuss with IMC and HLSS on who should be the lead partner on EVD preparedness and response in Gabad/Juba	Health Cluster
5	HLSS to provide a designated ambulance for the EVD preparedness and response in Juba	Health Link South Sudan
6	WHO/Secretariat to update the budget and review the gaps by tomorrow 3 <sup>rd</sup> October and make formal request from partners and donors for resource mobilization	WHO/Secretariat
7	MoH to identify SDB teams that will be trained and deployed to high risk states. The SDB teams should preferably reside in their area of deployment	MoH

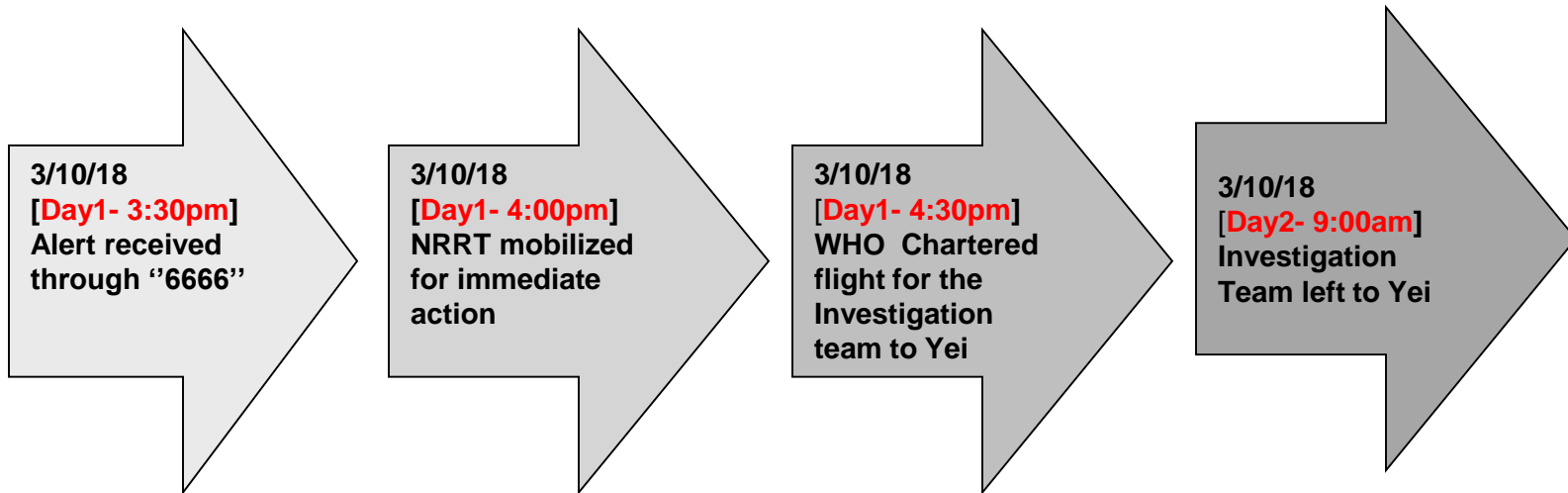


# Key action points from meeting held on 02/10/2018

Action	Description	Responsible
8	MoH to facilitate the allocation of land for the construction of isolation centers and provide focal persons to WFP in the respective locations for coordination purpose on the construction work	MoH
9	WFP to construct slabs for the 10 isolation centers identified. Four (Juba, Nimule, Yambio and Yei) out of the 10 locations will be prioritized	WFP
10	UNICEF to provide tents for all the 10 identified isolation centers	UNICEF
11	CDC to deploy laboratory expert by mid-October to support the laboratory pillar	CDC
12	UNOCHA to take the lead and fast track the establishment of safety and security TWG	UNOCHA
13	WHO to support the development of the minimum standards for WASH	WHO
14	MoH to fast track the finalization of the vaccine protocol and set timeline for the Vaccination campaign against Ebola	MOH



# Update on EVD alert – Yei River State



## Alert Information

- 29 years South Sudanese
- Stayed in Refugee camp in DRC for 21 months
- Came sick to Yei on 30<sup>th</sup> Sep from DRC
- The following symptoms were reported
  - Bleeding from eyes
  - General body pain
  - Blood in urine
  - Died at home (3/10/18)

## Team deployed for investigation

- SMOH Surveillance officer
- SMOH Communication Officer
- MOH WASH&IPC Expert
- MOH Laboratory Expert
- UNICEF Technical officer
- WHO Epidemiologist

3/10/18: UVRI contacted to be on standby receive the sample for laboratory confirmation

# Updated information from the NRRT, Yei

- Met the state minister and DG for Yei River
- State RRT visited the neighborhood (St. Mary) but could not locate the house
- National RRT visited the community to locate the house
- National and State RRT met and sensitized the community leaders and to continue with active case search



# EVD in DRC

- **Update on Ebola in DRC for 2<sup>nd</sup> October**

- Total of **162 cases** (**130** confirmed & **32** probable), including **106** deaths.

- **Over 5700 contacts have been registered, of which 1660 remain under surveillance as of 25 September.**

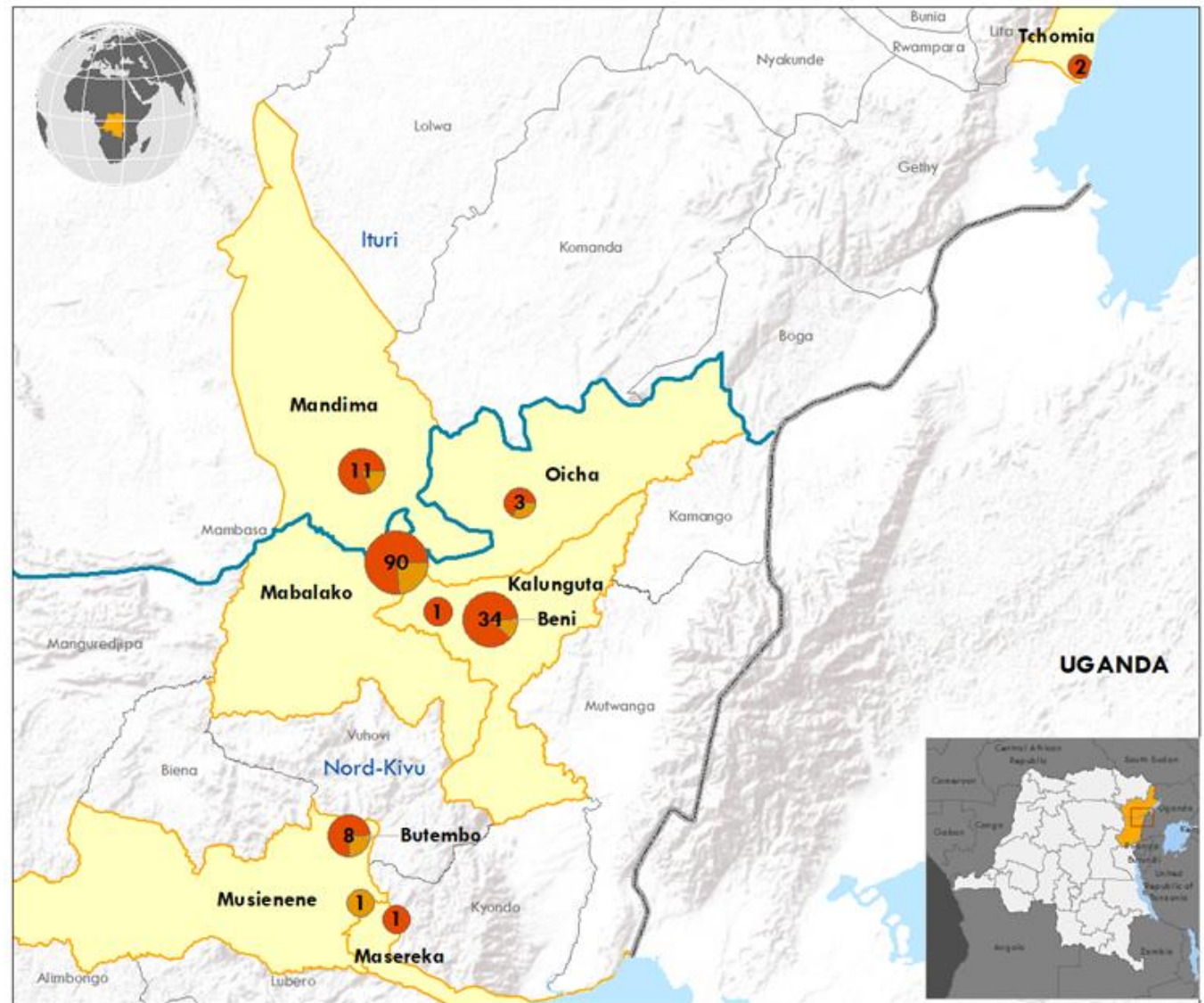
- From 19 to 25 September, a high proportion of contacts ranging between 95-98% were followed up daily;

- however, coverage fell to between **60-76%** from 23 to 25 September due to the suspension of field activities in Beni and a new front of operations in Tchomia.





### Boundaries and Locations Subject to Confirmation



Data Source: World Health Organization, The Ministry of Health Democratic Republic of the Congo, OpenStreetMap  
 Map Production: WHO Health Emergencies Programme  
 Request ID: DRCE\_NK\_001



The boundaries and names shown and the designations used on this map do not imply the expression of any opinion whatsoever on the part of the World Health Organization concerning the legal status of any country, territory, city or area or of its authorities, or concerning the delimitation of its frontiers or boundaries. Dotted and dashed lines on maps represent approximate border lines for which there may not yet be full agreement.






# BH&PoE Status update

State	# of Points of Entry Identified	# of Screening Active	# of Screening prioritized	# of people screened	# of Alerts	# of Isolation centers Identified	# of ETUs Identified	Remark
Gbudue	4	3	1	1,647	1	0	0	Sakure, Gangura, Yambio Airstrip
Jubek	1	1	0	27,026	1	0	0	JIA
Maridi	5	0	1	0	0	0	0	Maridi airstrip
Tambura	5	0	1	0	0	0	0	
Torit	8	2	1	192,974	8	0	0	Nimule & Nimule Port River CP
Wau	1	1	0	245,	0	0	0	Wau Airport
Yei River	15	3	4	707	1	0	0	Kaya, Yei RRC, Yei sirstrip
<b>Total</b>	<b>39</b>	<b>10</b>	<b>14</b>	<b>222,599</b>	<b>11</b>	<b>0</b>	<b>0</b>	



# Border health and points of entry

## Border crossing point

 **39** identified  
**14** prioritized  
**10** functional

## Screening of Int. travelers

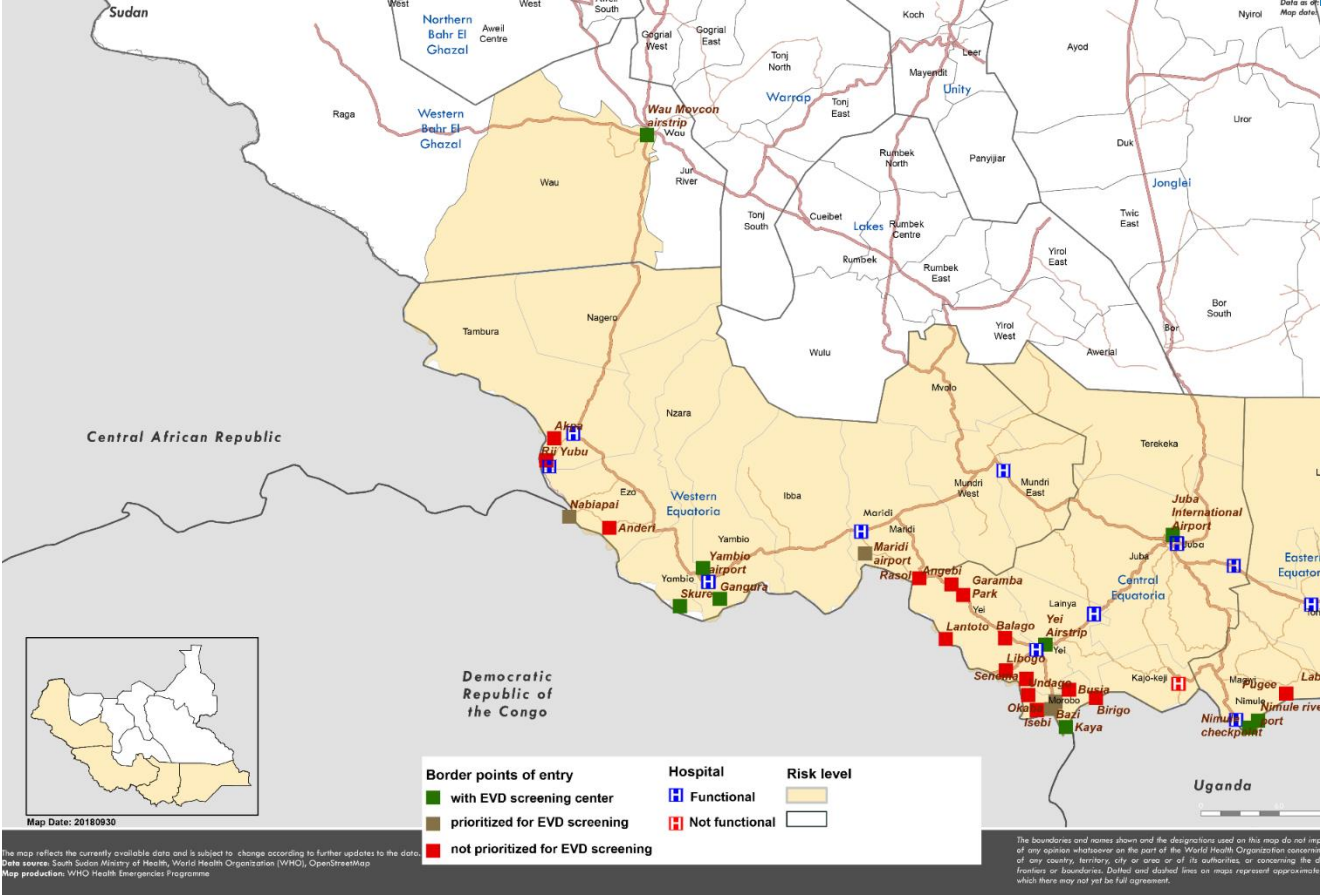
 **222,599** screened  
**10** alerts

## Ebola isolation center

 **10** identified  
**0** functional

## Designated Ambulance

 **10** needed  
**0** available



# BH&POE

- SOPs on screening of travelers at points of entry
- Trained 40 master trainers on SOPs on screening of travelers at points of entry
- Printed and distributed job-aid materials on screening to Master trainers

Trainers will receive tool kits and cascade to the training to screeners and non health partners

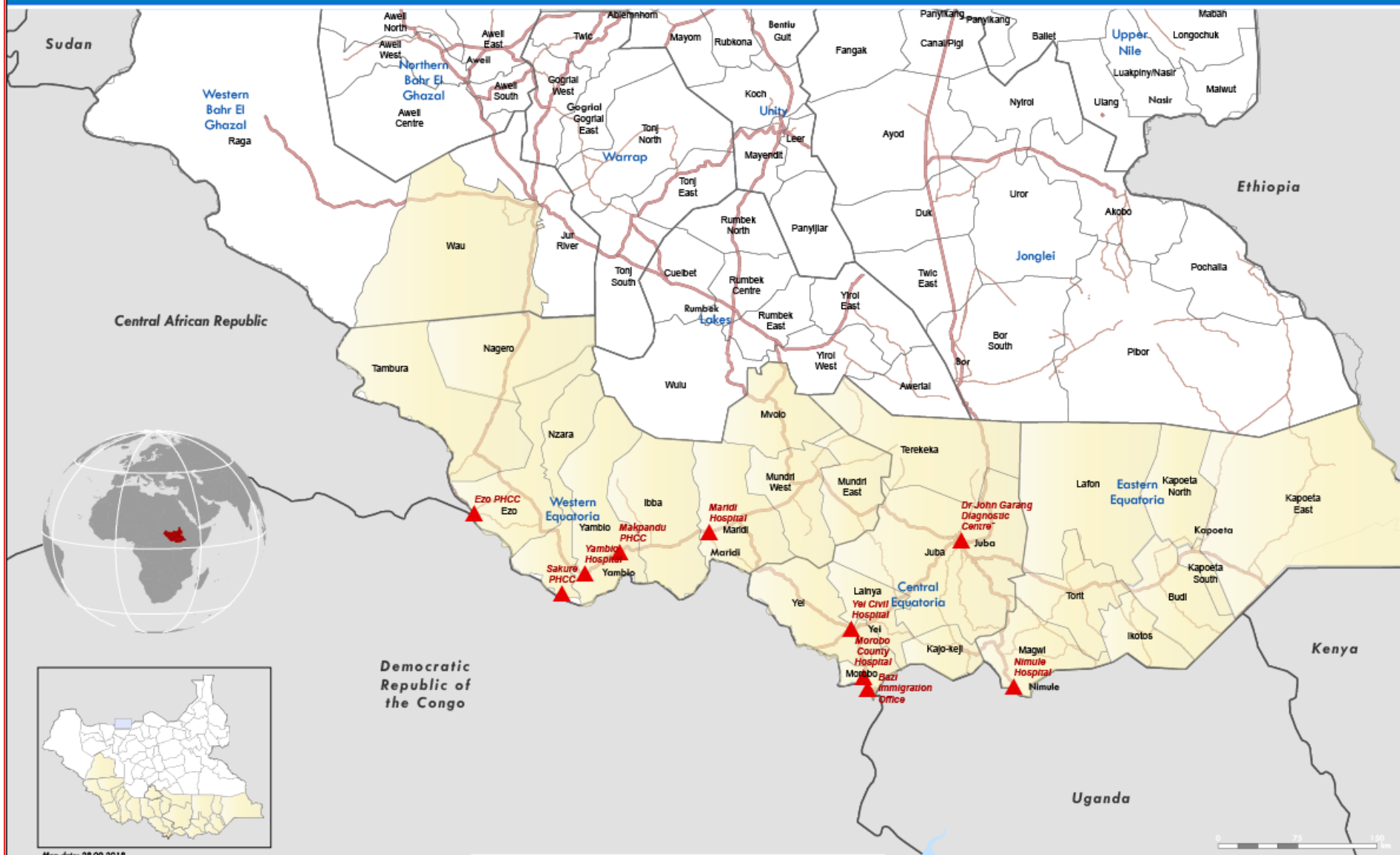


# Case management/Isolation Centers

State	Isolation center	Status	# of beds available
Jubek	Juba - Dr John Garang Diagnostic Centre	Not established	0/8
Torit	Nimule Hospital	Required upgrading	3/6
Yei River	Yei Civil Hospital	Not established	0/6
	Bazi Immigration office	Not established	0/6
	Morobo county Hospital	Not established	0/6
Yambio	Yambio Hospital	Not established	0/6
	Sakure PHCC	Not established	0/6
	Ezo PHCC	Not established	0/6
	Makpandu PHCC	Not established	0/6
Maridi	Maridi Hospital	Not established	0/6
Wau	*UNMISS clinic/Wau Hospital	Not established	0/6



# South Sudan: - Location of Isolation Centers for Ebola Preparedness and Response, 2018



Map date: 28.09.2018

Legend			
	EVD Isolation Center		Primary road
	High risk states		State boundary
			County boundary
			Secondary road

The boundaries and names shown and the designations used on this map do not imply the expression of any opinion whatsoever on the part of the World Health Organization concerning the legal status of any country, territory, city or area or of its authorities, or concerning the delimitation of its frontiers or boundaries. Dotted and dashed lines on maps represent approximate border lines for which there may not yet be full agreement.

The map reflects the currently available data and is subject to change according to further updates to the data.  
 Data sources: South Sudan Ministry of Health, World Health Organization (WHO), OpenStreetMap  
 Map production: WHO Health Emergencies Programme

# TWG meetings

<b>TWG</b>	<b>Day of meeting</b>	<b>Time</b>
Border Health and Points of Entry	Every Monday	10:00am
Surveillance and Laboratory	Every Monday	2:00pm
Safe and Dignified Burials	Every Monday	2:30pm
Risk Communication and Social Mob	Every Tuesday	10:00am
Vaccination and Therapeutics	Every Tuesday	10:00am
Case management and IPC	Every Tuesday	11:00am





**Thank you**