



World Health
Organization

Ethiopia

Ethiopia: Landslide in Gofa Zone, South Ethiopia Region Situation Report

August 08 2024

No 3



15,515

Affected
Population*



6,600

Individual
affected to
relocated



249

Dead bodies
identified



51

Total injuries and
treatment
provided



\$1.6 million

Funding Request

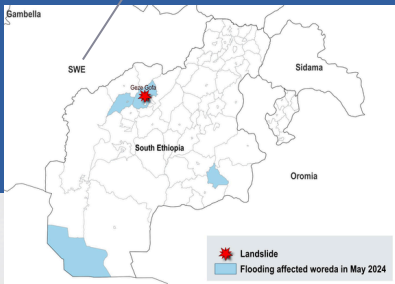
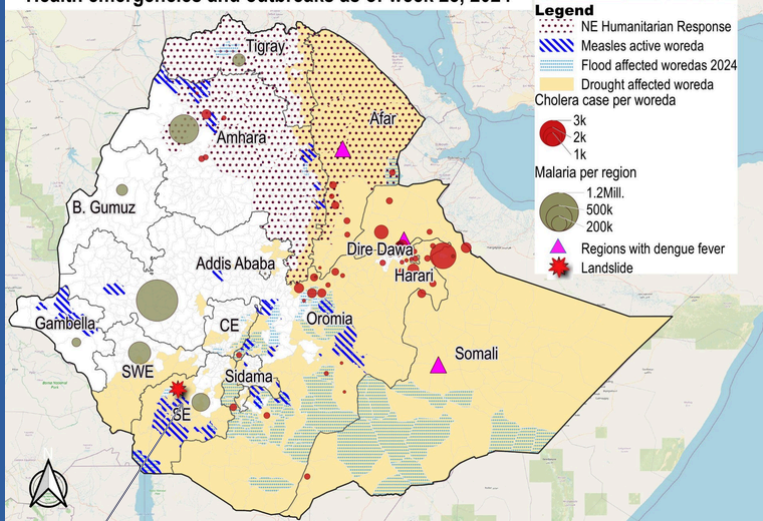


Temporary clinic set up with WHO-provided tents, serving the displaced population.

Highlights

- Landslide in Geza Gofa Woreda, Gofa Zone, Southern Ethiopia on 21–22 July 2024.
- At least 249 were reported dead, and over 15,000 were affected.
- Immediate needs: food, Emergency Shelter/Non-Food Items (ES/NFI), Water, Sanitation, Hygiene (WaSH), and health supplies.
- Multiple emergencies in the area including malaria, measles, communal conflict, drought, and floods.
- WHO team is currently completing the construction of tents for temporary clinics at the IDP site to provide immediate medical care.
- WHO Ethiopia Representative visited Gofa Zone, South Ethiopia, to donate additional medical supplies and offer condolences following the landslide. He also met with local authorities and partners to discuss urgent needs and long-term solutions.
- The Ethiopian Disaster Risk Management Commission (EDRMC), together with regional and woreda governments has established and Emergency Coordination Center at woreda level to coordinate the humanitarian response.

Health emergencies and outbreaks as of week 28, 2024



Situation

- Southern Ethiopia is a flood-prone region already affected by multiple emergencies, including malaria, measles, and cholera. The warm atmosphere caused by climate change has led to extreme rainfall, increasing the risk of such incidents. These challenges underscore the gravity of the situation.
- Heavy rains on 21 and 22 July 2024 in the mountainous area in two kebeles of Geza Gofa Woreda in Gofa Zone, South Ethiopia Region, resulted in a landslide. As of 25 July, at least 249 people were reportedly dead, and more than 15,000 had been affected. The situation is urgent and requires immediate attention.
- Among the deceased are the kebele chairperson, a member of the local police, health extension workers, and personnel from the Bureau of Agriculture who were on-site providing support after the initial incident on Sunday, 21 July.
- Ethiopia Declares Three Days of Mourning after Landslide Tragedy.
- Five houses were completely destroyed.



Response Needs

- Food, Emergency Shelter/Non-Food Items (ES/NFI), Water, Sanitation, Hygiene (WaSH), and health including medical supplies.

WHO Response Activities

- WHO team is currently completing the construction of tents for temporary clinics at the IDP site to provide immediate medical care.
- A total of 1,204 individuals have received treatment at these emergency facilities.
- As of August 4, 2024, 847 children have been screened for malnutrition. Among them, 68 cases of Moderate Acute Malnutrition (MAM) and 5 cases of Severe Acute Malnutrition (SAM) were identified and are receiving nutritional support.
- Worked with the Regional Health Bureau (RHB) to finalize the Health Sector Response Plan, which was submitted to the Emergency Coordination Center (ECC) for compilation.
- Supported the health sector's input into the UNOCHA response plan.
- Assisted in developing daily reporting tools, action trackers for response pillars, and a Monitoring and Evaluation (M&E) framework for both individual pillars and the overall response.
- WHO rented a temporary office to enhance coordination efforts for the response.
- Conducted a mapping exercise to identify and coordinate with partners involved in the response, including WHO, UNICEF, IOM, WFP, OCHA, UNFPA, SCI, African CDC, ECC-SDCOS, CRS, and MSI.
- Established communication channels, such as a WhatsApp group, to facilitate real-time information sharing and coordination.
- Held three Health Cluster meetings to discuss and align on response strategies and actions.
- Created Technical Working Groups (TWGs) for Mental Health and Psychosocial Support (MHPSS) and Gender-Based Violence (GBV) to address specific needs.
- Developed and distributed Health Cluster Coordination reporting tools to streamline data collection and reporting.



- Plans are in place to start and strengthen additional Technical Working Groups to address emerging needs.

Upcoming plans

- Upcoming plans for RHB and WHO to conduct monitoring visits of pillar activities to ensure effective implementation.
- Efforts are underway to improve the quality of services provided.
- Development of a referral mechanism to ensure proper management of cases.
- Support efforts to mobilize communities and conduct behavioral assessments to inform Risk Communication and Community Engagement (RCCE) strategies.
- Ensure the continuity of Emergency Health Services (EHS) to maintain quality health and nutrition care.
- Support coordination, reporting, and engagement with partners to deliver a comprehensive response.
- Continue mapping partners and resources to ensure effective utilization.
- Implement awareness-raising activities on MHPSS and GBV to inform communities about risks, prevention strategies, and available support.

WHO Representative (WR) Visit



WR arriving at the incident area,



Wide view of the affected area, showcasing the extensive damage and displacement.



Temporary IDP sites with newly set up tents and facilities



WR engaging with IDPs, listening to their stories and concerns. Local residents and community leaders share their experiences with WR





Medical staff administering care and distributing essential supplies.



Donation ceremony, presenting tents for temporary clinics.



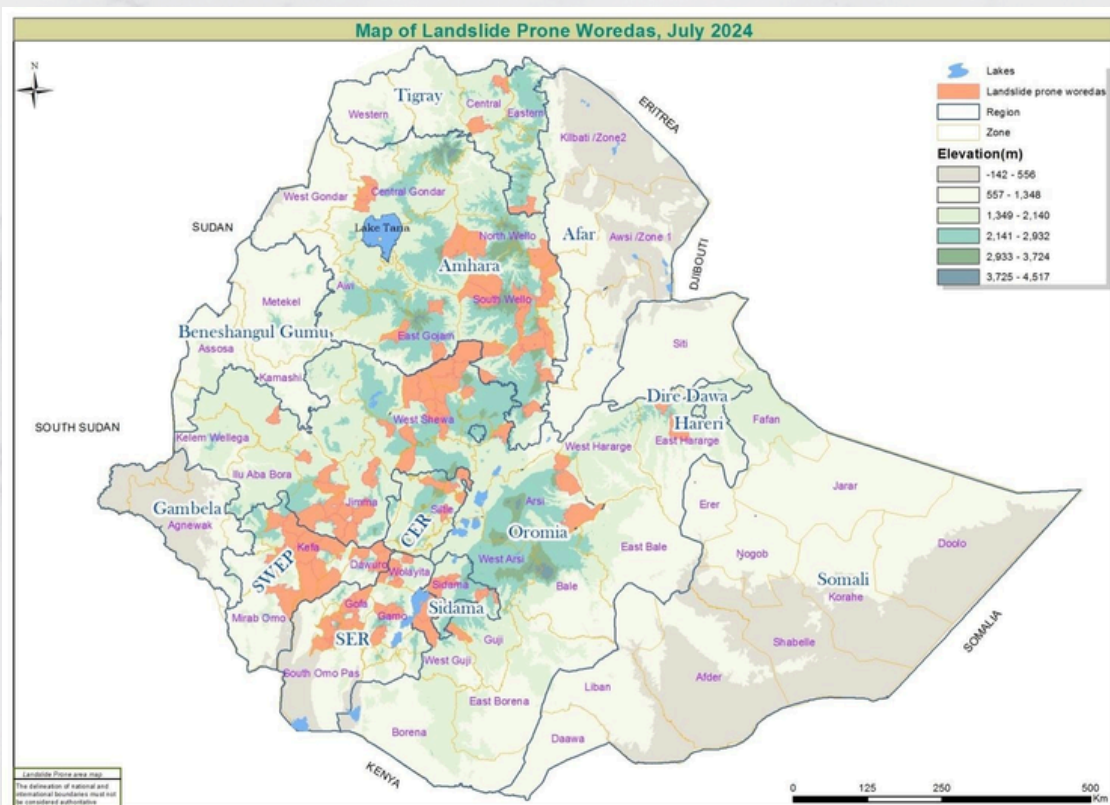
Discussing key issues with DRMC Head and officials.



Alert on Landslide Prone Areas in Ethiopia to Strengthen Health Sector Preparedness and Response Activities

According to the alert shared by the Ethiopia Disaster Risk Management Commission (EDRMC) on flood-prone areas in Ethiopia to strengthen preparedness and response activities for the health sector:

Region	Zone	Woreda
Amhara	7	22
Central Ethiopia	4	5
Oromia	10	34
Sidama	1	4
South Ethiopia	2	14
South West Ethiopia	5	18
Tigray	2	3
Total	31	100



Similar Incidents Reported:

On August 5, 2024, the landslide triggered by heavy rains in Wolaita zone, southern Ethiopia, resulted in at least 13 fatalities. The number of casualties is expected to rise as search and rescue operations continue.

Sources

OCHA

South Ethiopia Regional Health Bureau

Ethiopia Disaster Risk Management Commission (EDRMC)

Contact

WHO Ethiopia Office

E-mail: afwcoetcommunication@who.int